

FC-41

FORESTER
FORESTRY EQUIPMENT



Phone
+372 5555 7000



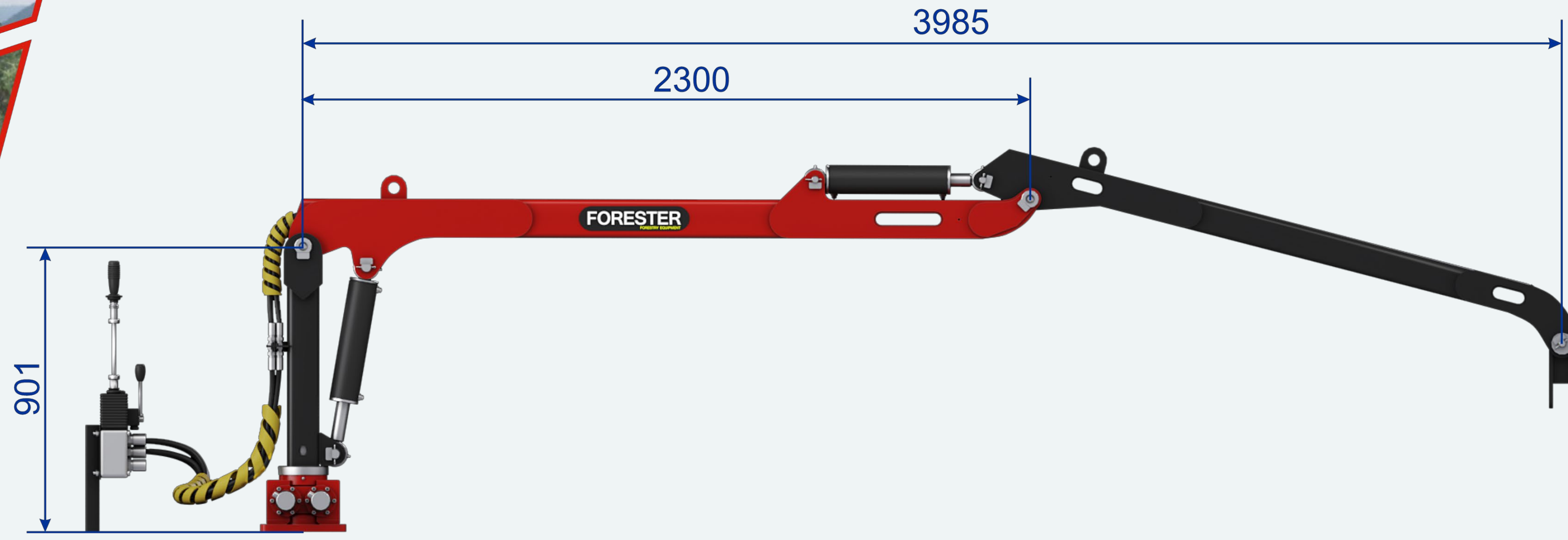
Address
Aruküla tee 9, Tartu 51017



E-mail
info@forester.ee

FC-41

FORESTER
FORESTRY EQUIPMENT



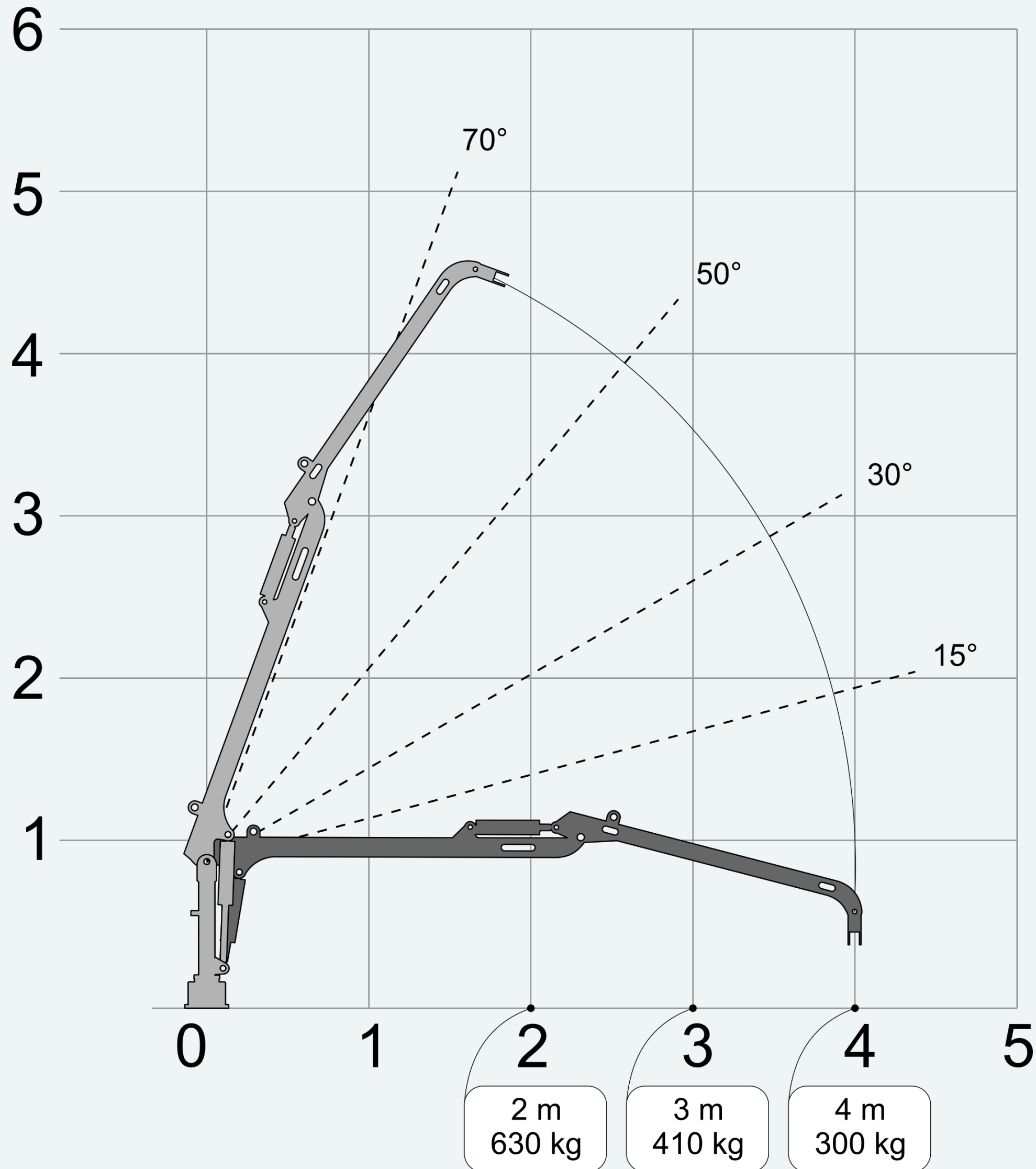
FC-41

FORESTER
FORESTRY EQUIPMENT

Specifications

Lifting capacity at max. outreach, kg:	300
Max. outreach, mm:	4100
Slewing cylinders, pcs:	4
Slewing angle, degrees:	360
Max. operating pressure, bar:	160
Slewing torque, kNm:	7
Lifting torque, gross kNm:	28
Booms, pcs:	1
Weight, kg:	350





- The design of the rotary column allows to withstand extreme loads;
- The use of hydraulic control valves ensures smooth running and high speed of operation;
- The entire hydraulic system is equipped with hydraulic locks;
- The hydraulic system is equipped with reliable protection against mechanical damage to the system components, pipelines and RVD;
- Hydraulic locks protect the CMU from overload, thereby ensuring the requirements of the standards and increasing the service life of hydraulic manipulators;
- Hydraulic equipment is characterized by maximum reliability of operation, high productivity, perfect product quality, versatility, modern level of automation;
- Excellent balance and easy handling of crane-manipulator plants for all components.

FC-41

FORESTER
FORESTRY EQUIPMENT



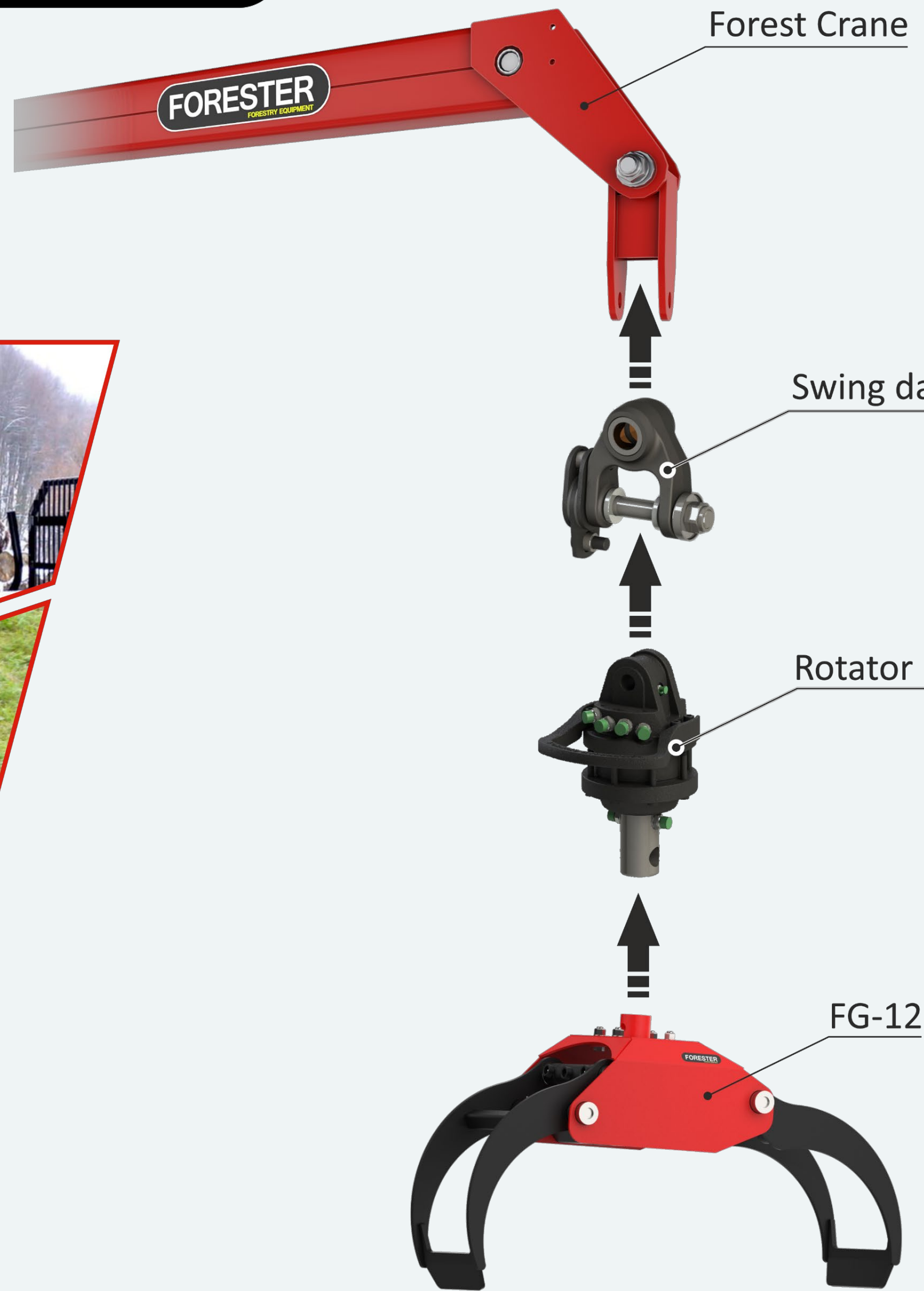
- Extended access to moved goods with a small dead zone under the manipulator.
- Control system: ON/OFF;D3M;2+4; radio remote control.
- Reliable mechanism of rotation of the manipulator with increased torque due to the simultaneous operation of 4 cylinders.

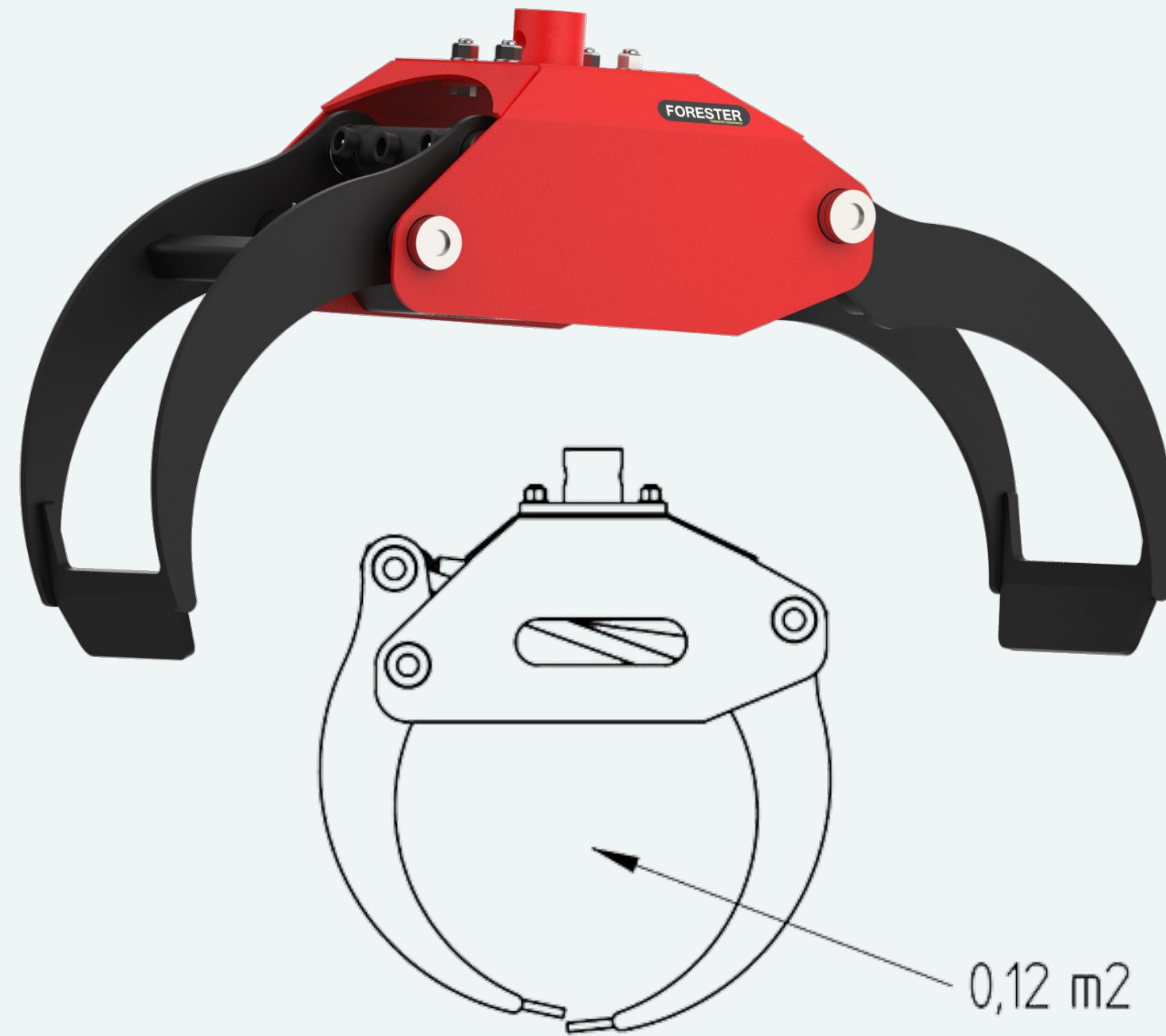
Optional equipment:	Hydraulic pump
	Hydraulic winch

Recommended equipment:	
Forest gripper:	FG-12

Recommended equipment

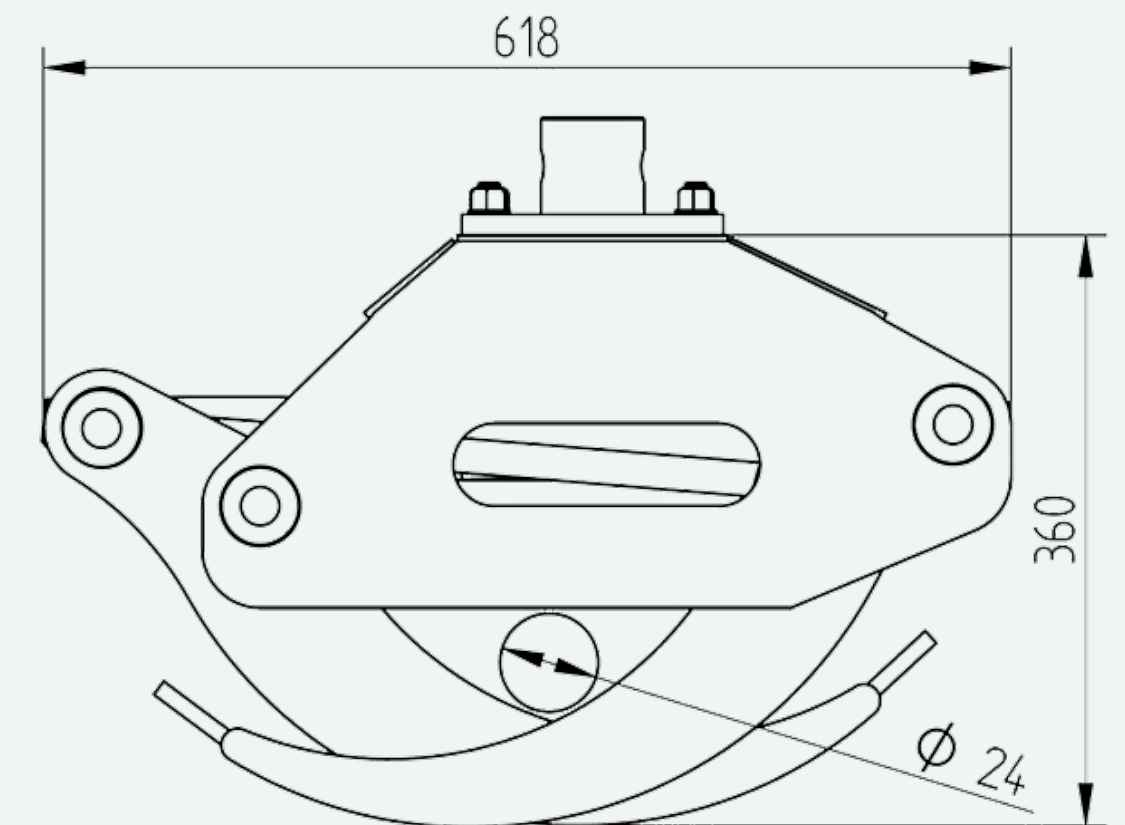
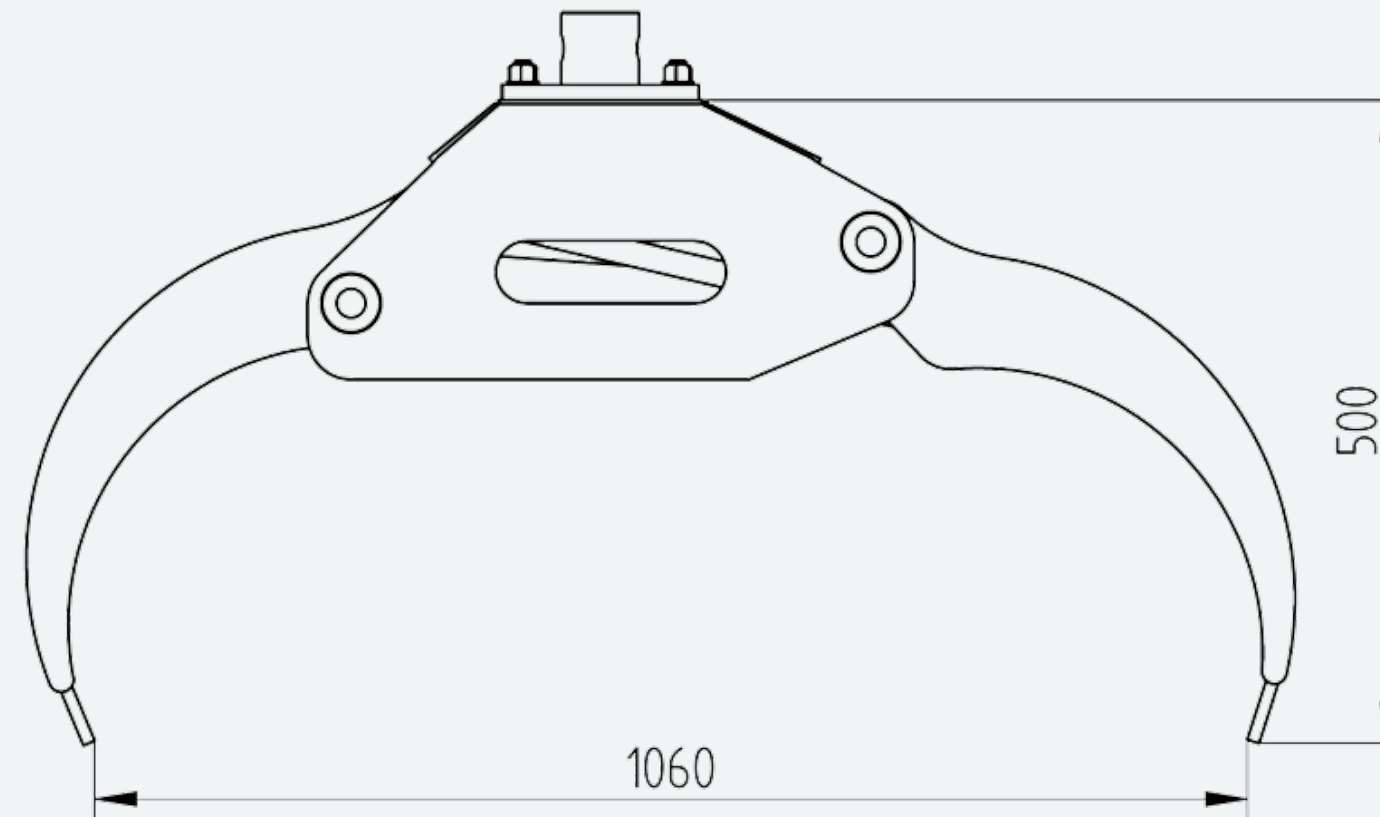
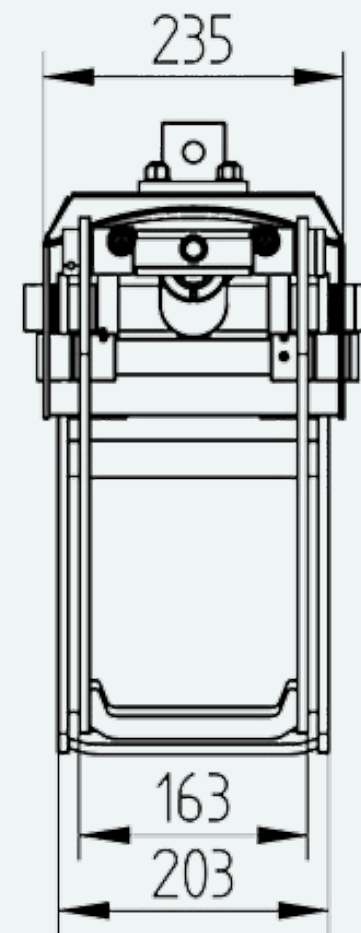
Forest gripper:	FG-12
Swing damper:	FHL 01B
Rotator:	FHR 1.000L





Specifications

Weight, kg:	48
Max working pressure, bar:	175
Height closed, mm:	360
Height when open, mm:	500
Width large claw, mm:	203
Width small claw, mm:	163
House width, mm:	235
Max opening, mm:	1060
Min gripping diameter, mm:	24
Gripping area, sq.m:	0,12



FHR 1000L

FORESTER
FORESTRY EQUIPMENT



10
kN



5
kN



350
nm



12
kg



10
l/min

